

Guam Community College

Fiscal Year 2007

A Report to Our Citizens

Published May 16, 2009

Table of Contents

Background	1
Performance Indicators	2
Financial Information FY 2007	3
Future Outlook	4

Mission Statement

The mission of Guam Community College is to be a leader in career and technical workforce development by providing the highest quality education and job training in Micronesia.

Why we exist

Guam Community College (GCC) was primarily the Guam Trade and Guam Technical High School, which began in the year 1959. Guam Trade and Guam Technical High School was developed to offer specialized training in various vocational education fields for students.

In the year 1977, Public Law 14-77 was passed to strengthen and consolidate vocational education on Guam by establishing Guam Community College. GCC absorbed both the Guam Trade and Guam Technical High School program. GCC is now a public, open access secondary and postsecondary institution located in Mangilao, Guam on a 22-acre site. The college offers secondary and postsecondary vocational programs, adult and continuing education, community education, and short-term specialized training.



Benefits to the Community

GCC continues to be a driving force in this region's economy. The goals of the college are to be financially accessible to the community and to provide a strong return on investment. As an open-door institution of higher education, GCC offers many benefits to the community:

- Students benefit from higher earnings as a result of higher education and training.
- The community benefits from social cost savings, including reduced unemployment, welfare costs, and incarcerations.
- The community benefits from a unique blend of economic opportunities and other outcomes having a strong impact on increased earnings and productivity.

Goal Initiatives

➤ **Pioneering**

This goal seeks to identify the career and technical as well as basic educational skill requirements of the workforce through periodic employers' needs assessment in order to improve the skill levels and productivity of the island's workforce.

➤ **Educational Excellence**

This goal is defined by its ability to demonstrate that student learning outcomes (SLOs) are being attained, as gauged by the institutionalized process of systematic and regularized assessment that allows programs and services to identify, analyze, and use assessment results for accountability and program improvement.

➤ **Community Interaction**

This goal aims to improve awareness of the College and increase public and fiscal support for its vision, which in the long run, is intended to reduce GCC's financial dependence on the Government of Guam.

➤ **Dedicated Planning**

This goal provides a means to measure progress towards attaining the vision of the College each year through a systematic review and evaluation, the results of which are utilized to inform decision making at the College at all levels.

Performance Indicators

GCC is a Place of Opportunity! **'Start Here' and 'Go Anywhere'**

As one of the largest community colleges in the Micronesia region, GCC was created to provide affordable and accessible educational opportunities for residents on Guam and Micronesia.

Student and Learning Focused

GCC exists because students choose to come to GCC in order to reach their personal and professional goals. GCC has established baseline techniques that measure and assess the degree to which students are meeting the specific objectives of a course or program.

Accessible

GCC is a public open-admission comprehensive community college with the primary purpose of providing accessible secondary and post-secondary education.

Affordable

Low tuition and fees along with extensive financial aid opportunities, including federal, local, and college scholarship programs, make higher education affordable for many students who choose to attend GCC.

Highly Respected

For the seventh consecutive year, GCC has been qualified

as a low-risk auditee by the Office of the Public Auditor (OPA). OPA report states that GCC's management personnel have good work ethics, and review of financial records have no questioned costs.

Responsive

GCC is responsive to the needs of the students and the community by emphasizing workforce development programs and partnerships.

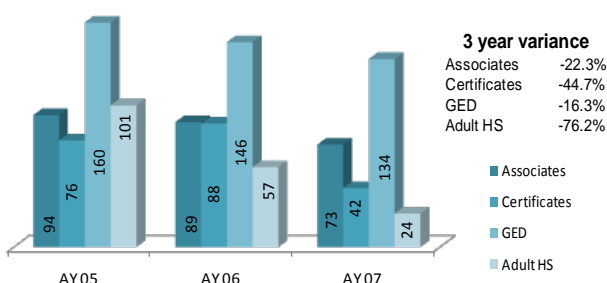
*"...our faculty, staff and administrators work diligently to create a successful future for our students."
- President M. Okada*

Fall 2007 Enrollment

Over the past academic year, GCC's Fall enrollment totaled 3,743 students. From this overall figure, 1,818 students were enrolled in post secondary courses and 1,925 were enrolled in career and technical education courses that are provided by GCC at the four public high schools within the Guam Public School System.

Post Secondary Graduate

GCC's post secondary graduate rates have dropped significantly. The Associates program, GCC's largest program, only graduated 73 students in 2007 compared to 94 students in 2005. Decreased retention rates and increased tuition and fees rates are contributing factors to the variances.



Post –Secondary Enrollment Status

	2004-05	2005-06	2006-07
Full-time	53%	40%	54%
Part-time	43%	36%	24%

Degree	Post Secondary Student Enrollment		
School Year	2005	2006	2007
Associate of Arts	159	183	195
Associate of Science	801	725	644
Certificate	197	240	145
Adult High School	193	77	49
Journey Worker Certificate	122	122	88
Criminal Justice Academy	0	14	6
Industry Certification	2	0	1
Undeclared	335	425	690
Total	1,809	1,786	1,818

Secondary High School Enrollment	FA 2005	FA 2006	FA 2007
George Washington High School	547	653	661
John F. Kennedy High School	468	533	503
Simon Sanchez High School	261	416	352
Southern High School	358	377	409
Total	1,634	1,979	1,925

Selected Demographic and Ranking Information Comparison

Colleges in the Pacific:	College of the Micronesia FSM	College of the Marshall Islands	Guam Community College	Hawaii Community College
Ranking	Insufficient data	2,714	1,811	2,093
Total Cost to Attend (tuition & fees, books, room & board, etc)	\$9,641	\$7,988	\$3,226	\$2,491
Student to Faculty Ratio	17 : 1	13 : 1	6 : 1	15 : 1
Retention rate (full time : part time)	55% : 45%	17% : N/A	54% : 24%	53% : 29%

The ranking system is based on statistical data provided by government sources. Rankings are based on different measures including factors such as student retention, faculty salary, and student / faculty ratio. The colleges are ranked against different universities and colleges across the nation.

Financial Information

Increase in Revenues

Revenues increased from \$22.1 million in FY 2006 to \$23.8 million, or \$1.7 million more in FY 2007. This increase was mainly attributed to GCC receiving more in appropriations from the government of Guam (\$14.1 million in 2007 compared to \$11.1 million in FY 2006), student tuition and fees (\$3.1 million compared to \$2.8 million), and federal grants and contracts (\$6.4 million compared to \$5.8 million). A decline in revenues was seen in government of Guam grants and contracts (\$485,000 compared to \$1.3 million), contracted educational services (\$595,000 compared to \$1.3 million), and other revenues (\$417,000 compared to \$1.2 million).

Revenues

	FY 2005	FY 2006	FY 2007
Tuition and Fees	\$ 2,678,080	\$ 2,764,582	\$ 3,105,694
Less: Scholarship discounts and allowances	\$ (1,202,799)	\$ (1,612,933)	\$ (1,943,825)
Federal Grant & Contracts	\$ 5,121,974	\$ 5,784,799	\$ 6,372,562
Government of Guam grants and contracts	\$ 434,675	\$ 1,311,007	\$ 485,458
Contracted educational services	\$ 1,211,545	\$ 1,253,697	\$ 595,279
Auxiliary enterprises	\$ 713,483	\$ 604,369	\$ 610,270
Other Revenues	\$ 534,052	\$ 1,168,742	\$ 416,503
Less uncollectible revenues	\$ (158,297)	\$ (330,000)	\$ (290)
Nonoperating Rev. (GovGuam Appr.)	\$ 12,866,283	\$ 11,144,198	\$ 14,142,196
Total	\$ 22,198,996	\$ 22,088,461	\$ 23,783,847

Source: GCC 2006-2007 Annual Report; GCC 2007-2008 Annual Report

Expenditures

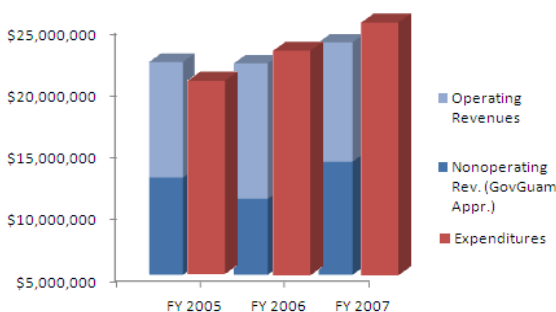
	FY 2005	FY 2006	FY 2007
Instruction	\$ 7,468,774	\$ 7,598,361	\$ 8,266,302
Institutional support	\$ 3,097,461	\$ 3,461,060	\$ 5,740,567
Scholarships and fellowships	\$ 2,819,813	\$ 2,902,298	\$ 2,973,429
Operations and maintenance of plant	\$ 1,467,622	\$ 2,374,214	\$ 1,716,858
Student services	\$ 2,236,165	\$ 3,072,433	\$ 2,880,857
Academic support	\$ 1,784,301	\$ 1,376,854	\$ 1,296,771
Depreciation	\$ 754,615	\$ 800,153	\$ 938,341
Planning	\$ 234,903	\$ 612,973	\$ 957,201
Auxiliary enterprises	\$ 432,711	\$ 571,665	\$ 608,686
Total	\$ 20,296,365	\$ 22,770,011	\$ 25,379,012

Source: GCC 2006-2007 Annual Report; GCC 2007-2008 Annual Report

Increase in Expenditures

Total expenses increased by \$2.6 million, going from \$22.7 million in 2006 to \$25.3 million in 2007. The increase in expenses came from institutional support (\$5.7 million versus \$3.4 million in 2006), instruction (\$8.3 million versus \$7.6 million), planning (\$957,000 versus \$613,000), and depreciation (\$938,000 versus \$800,000). The increase in institutional support was mainly due to contract services relating to the implementation of the college's Integrated Data Base System (IDBS), including training, consultant work, licensing, and system maintenance support. At the end of FY 2007, there were 212 employees at GCC, with 11 being paid with federal funds. Total salaries and wages increased \$588,000, going from \$13 million in FY 2006 to \$13.6 million. These increases do not correspond with the decrease in student enrollment.

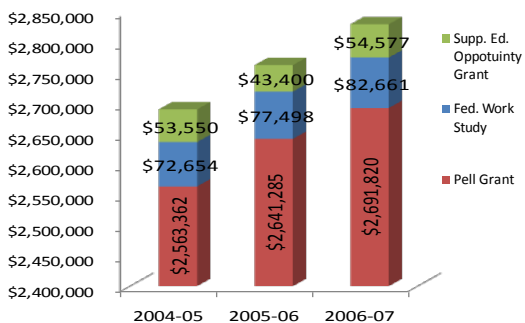
Revenues vs. Expenditures



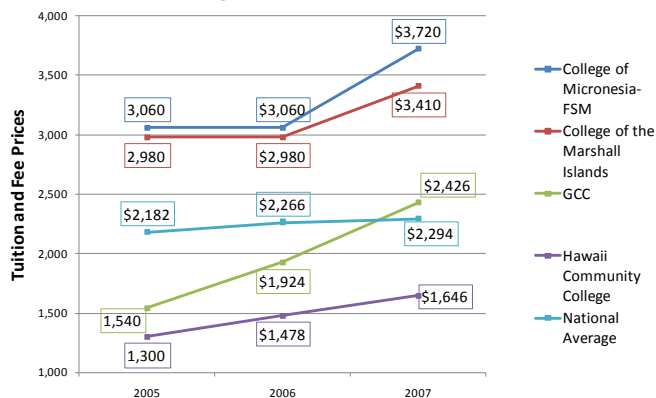
FY 2007 Grants

Grantor Agency	Federal Project Title	Amount
U.S. DOE	Adult Basic Education	\$ 479,719
U.S. DOE	Supplemental Education Opportunity Grant	\$ 56,747
U.S. DOE	Higher Education Institution Aid	\$ 176,500
U.S. DOE	Federal Work Study Program	\$ 75,030
U.S. DOE	TRIO Student Support Services Program	\$ 231,019
U.S. DOE	Vocational Education Basic Grant	\$ 381,156
U.S. DOE	Federal Pell Grant Program	\$ 2,705,128
U.S. DOE	Vocational Education-OEIS Grant	\$ 20,342
U.S. DOE	Talent Search	\$ 173,231
U.S. DOE	Academic Competitive Grants	\$ 3,750
GPSS	GPSS Consolidated Grants	\$ 242,849
GovGuam	ES&P Development of the Territories	\$ 184,824
GovGuam	Hazard Mitigation Grant	\$ 126,113
Total		\$ 4,856,408

Financial Aid Awarded



Colleges in the Pacific Comparison



*Figures are based on in-state annual tuition and fees provided by IES National Center for Educational Statistics : www.nces.ed.gov

Future Outlook

The Guam Community College (GCC) is preparing for what may be the largest and most dynamic period of economic growth and social change in Guam's recent history. The United States military is planning to invest \$15 billion to upgrade and expand its facilities on the island. The island's population is expected to permanently increase by at least 20% or some 30,000 people, not including expected immigrants from the Freely Associated States of Micronesia, the Commonwealth of the Northern Marianas and the estimated 15,000 temporary H-2 workers that will be brought to Guam during the build-up. The planned construction for defense installations, housing, and infrastructure, as well as the maintenance and operations of these facilities for the long term, will create an unprecedented need for skilled and certified trade workers. The anticipated need for workers will be so large that the U.S. Congress has lifted restrictions on the number of H-2 visa laborers which can be brought to Guam and the region to meet the need for skilled labor during the period of the buildup. GCC is mandated by Public Law 14-77 to lead the Territory's initiative to train and prepare Guam's workforce to participate in the growth of Guam's economy. As Guam's most capable adult and technical education resource, GCC has been prepared to guide GCC in fulfilling the community's need for technical and adult education training for the next five years. The following are three major construction projects GCC are currently working on:

Allied Health Center

The Allied Health Center is the most recent project that is awaiting its opening in Fall 2009. It consists of a 25,000 square foot all concrete building to house classrooms and laboratories for the Allied Health program and Science Department. The date of completion will be on August 4, 2009 and the project budget is \$3,778,550.



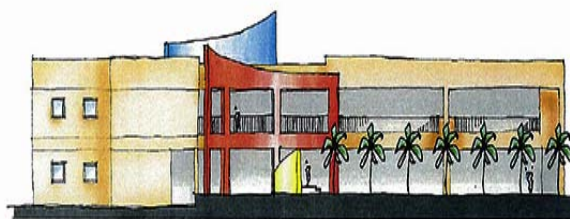
Learning Resource Center Expansion

The Learning Resource Center is a project that GCC is trying to initiate. This project calls for building an all concrete extension for the Foundation Building to relocate the current Library to the ground floor. Other uses for this building are yet to be determined. The project Budget is \$343,800 for Architectural & Engineering Services.



Student Center

The Student Center is another project that has yet begun. This Student Center will be used to centralize the services provided by the college, such as admissions and registration, student ID, bookstore, security and many more. The design of the Student Center is ongoing and calls for the construction of an all concrete building consisting of approximately 22,000 square feet. The total projected construction cost is \$4,313,880.



Challenges

The most important problem facing college admissions today is tuition and financial aid. Tuition and fee rates have increased dramatically over the past three years for colleges in the Pacific and nationwide. Based on a nationwide analysis, federal expenditures on Pell Grants rose 176% in constant dollars from 1977-78 to 2007-08, but the average Pell Grant per recipient increased by just 2% because of the large increase in the number of recipients. Because student aid and family income have not kept up with rising postsecondary prices, college is becoming less affordable and accessible, especially for low- and middle-income families. Total student enrollment population for Spring, Summer, and Fall semesters dropped from 4,075 in 2006 to 3,922 in 2007. Shrinking government revenues and increased competition from private sector providers affects GCC's ability to maintain its leadership role in the creation and implementation of workforce development programs. GCC received full accreditation by the Accrediting Commission for Community and Junior Colleges (ACCJC) for the years 2006 to 2012, but recent changes to WASC accreditation requirements require a systemic change in how GCC evaluates and monitors its progress. The linking of student learning outcomes to program and institutional effectiveness is a critical accomplishment, which must be met in the near term.

Images and information was provided by GCC's Annual Report and Fact Book and from: www.guamcc.edu